

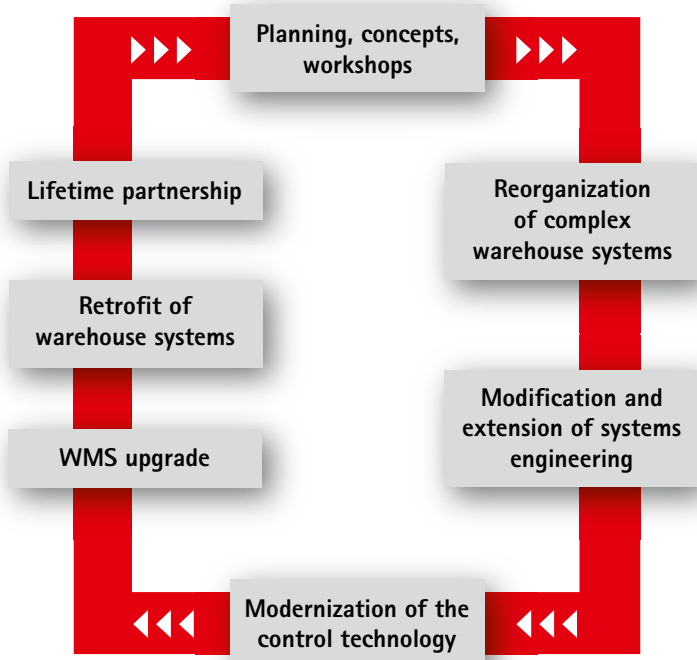
Forever young

How your material handling processes can always be kept up to date



RETROFIT

Forever Young: Retrofit



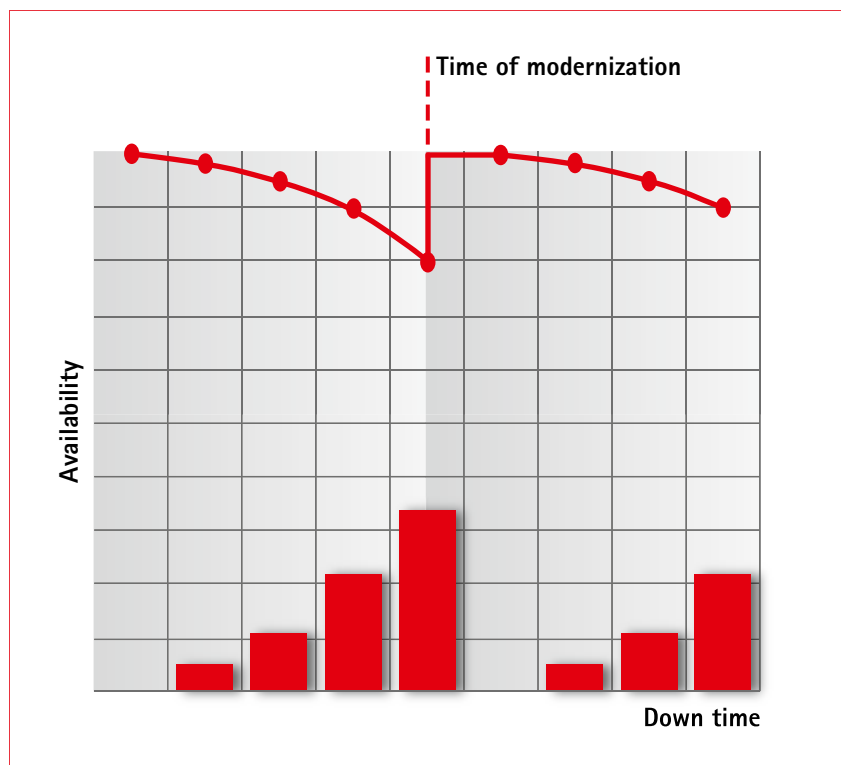
When a material handling system starts to show its age, servicing and maintenance are often no longer enough. The availability of spare parts drops, and unscheduled downtimes can pose a threat. We support you right from the start. We keep your material handling system "Forever Young".

viastore will meet with you to review your operation; we view your documentation, analyze the interfaces of your systems, from WMS to process control, measure the protocol traffic and check and evaluate the electrical and mechanical hardware. After the review, we will create a plan for your operation.



Markets change. Business and logistics processes have to follow, so that you stay competitive. For example, deliveries used to be done only by the pallet, today it's done in a large number of small and individualized shipments. While it used to be individual parts, now it's pre-assembled sub-assemblies.

Your material handling system needs to be able to keep up with your current demands. The objective, a clear and efficient structure based on up-to-date and dependable technology, because material flow and function sequences have to be unequivocally matched to the new conditions. Which components can be retained? Which of them have to be replaced by up-to-date standards? The focus is always on economical interaction of the new and the old. Complete documentation makes the system future-proof and permits further changes without any problem.



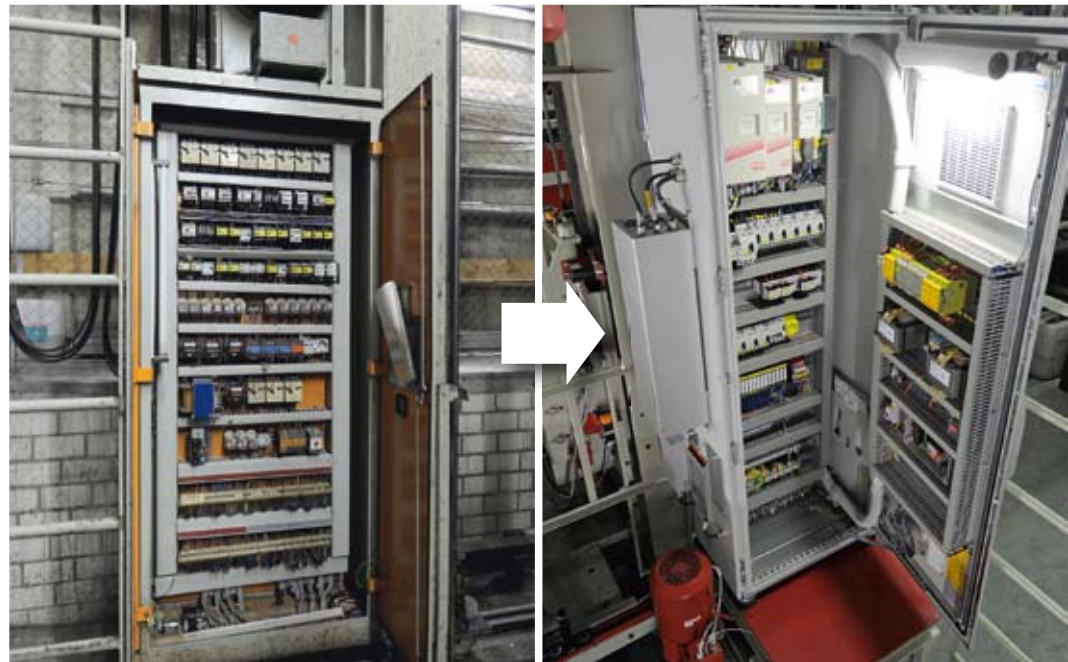
Alteration and expansion of the system technology



With more than 40 years of experience in material handling, viastore has comprehensive know-how in the fields of modification, modernization and retrofitting of existing systems, even those from other suppliers. Whether it's lengthening the shelf lanes, incorporating new conveyor lines, or order picking workstations, our engineers evaluate the current situation as a first step stage and find justifiable modernization and optimization potentials. To increase process reliability, we set up the systems in a test environment and put them into service outside your production times. That allows you to continue your work undisturbed. In the start-up phase, we train your employees and closely monitor all the processes. In real operations, we're on standby for you.

And by the way: in the first step of evaluating your operation, the solution may be something

very simple or inexpensive. For example, changing peripherals such as printers, monitors and PC's, or updating the dialogs. The result? More ergonomic systems. More motivation. More profitability. More performance.



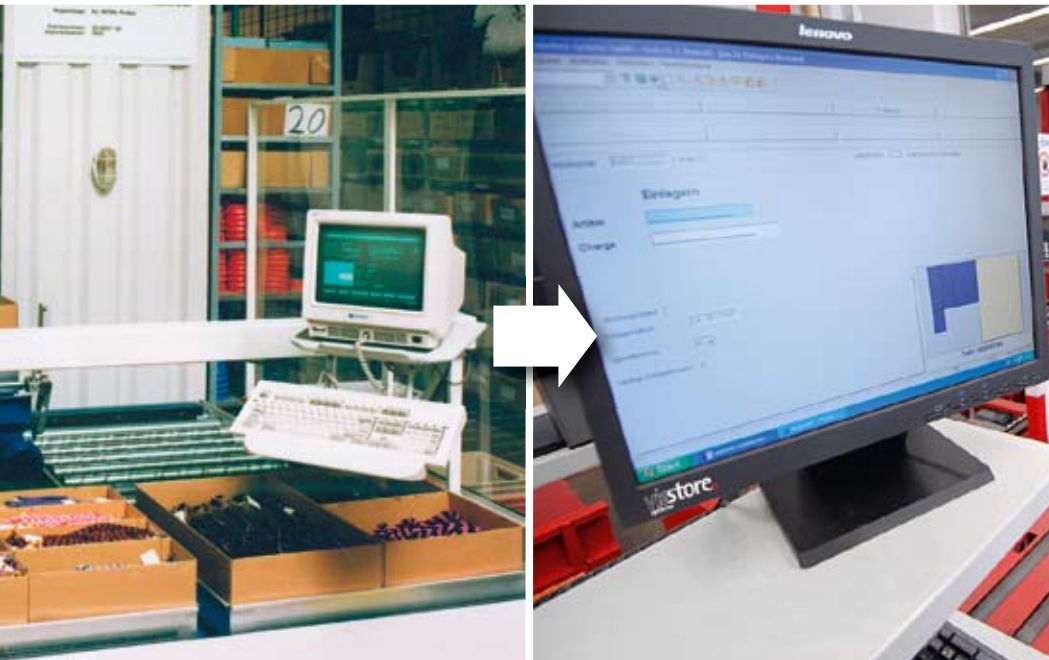
At the heart of a material handling system are its control and its mechanical parts. But when the control technology starts to show its age, the availability of the system will decrease, and spare parts will no longer be attainable. The outcome, unscheduled downtimes, failed deliveries, production halts, and annoyed customers. We'll modernize your control systems step by step. Often the new and old system will work in parallel, with clearly defined back up strategies. The change-over to the new system is done on the weekend, during scheduled downtime, or during working hours. Our experienced project managers ensure smooth and speedy implementation. The benefit for you: more dependability and better performance.

Our experienced project managers ensure smooth proceedings and a speedy implementation. All in a "one-stop shop". The benefit for you: more dependability and better performance.

Why modernize?

- System downtime
- Rising maintenance costs
- Cost-intensive spare part supply
- Lack of spare part availability
- Shorter servicing intervals
- Increased incidence of faults
- Rising energy costs
- Ergonomic and social aspects
- Stricter safety requirements
- Reaching of performance limits
- Systems are no longer supported

WMS upgrade



Many Warehouse Management systems have been in operation for so many years that they are not supported, unable to be upgraded and the hardware availability is decreased or non-existent. Functions such as multi-client capability, paperless order picking or forklift control systems are standard today.

We'll bring your WMS up to date, giving you a crucial advantage over competitors thanks to our standard WMS viad@t. That also includes the introduction of future-capable database solutions, computer systems and hardware components.

As an SAP Special Expertise Partner Supply Chain Execution, we have excellent connections, and comprehensive know-how. viastore provides our certified interface of viad@t to our current SAP solution, or as a software partner for introducing SAP to your warehouse or distribution center for the first time, either interconnected or without subsystems.

Why viad@t?

- Extensively tested and stable standard product with wide function scope
- High-speed but low-risk commissioning
- High-speed, low-cost and dependable individualized adjustments thanks to modular structure
- Supports current technologies such as RFID, Browser etc.
- Continual further development
- Multilingual
- Release-independent – all releases continue to be supported
- No annual license costs



Our customers are where your customers are. When this means relocating the warehouse and distribution system, we'll be there. In the case of relocation, we dismantle shelf systems, storage and retrieval machines, conveyor systems, software and control systems professionally.

We package, transport, reassemble and recommission them at the new location. While you look after your customers, we look after you. We don't finish until everything is running again and until you're satisfied.

Retrofit with viastore

We'll save you time and money:

- Higher system availability
- Efficient processes
- Higher handling capacity
- High-speed spare part service
- Higher system transparency
- Lower investment costs
- Low servicing costs
- Lower energy costs
- Avoidance of abrupt shutdowns
- Effective error localization and elimination
- Extended period of use
- Flexible during system modification
- Highly service-friendly
- Lifetime Partnership
- 24/7 hotline with fast reaction times thanks to remote access
- Regular servicing
- Spare parts with 24-hour access
- Service – whenever and wherever you need us



- New Systems
- **Modernization**
- Consulting and Planning
- Order Picking Systems
- Storage and Retrieval Machines
- WMS viad@t
- SAP Special Expertise Partner SCE (LES and EWM)
- Service, Hotline, Original parts

DE viastore systems GmbH
 Magirusstraße 13
 70469 Stuttgart
 Germany
 Tel. +49 711 98180
 Fax +49 711 9818180

NL viastore systems BV
 Elektrostraat 17
 7483 PG Haaksbergen
 Netherlands
 Tel. +31 53 5743861
 Fax +31 53 5743862

USA viastore systems Inc.
 4890 Kendrick SE
 Grand Rapids, MI 49512
 USA
 Tel. +1 616 9773950
 Fax +1 616 9775006

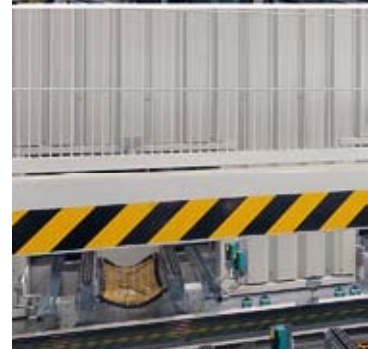
CZ viastore systems s.r.o.
 Dopravní 139/33
 318 00 Plzeň-Nová Hospoda
 Czech Republic
 Tel. +420 377 495406

FR viastore systems S.A.R.L.
 31 allée du Grand Coquille
 45800 St. Jean de Braye
 France
 Tel. +33 2 38619860
 Fax +33 2 38619866

RU ooo viastore systems
 Severnoe Highway
 Building 10, Office 306
 Ramenskoe
 Moscow Region 140105
 Russia
 Tel. +7 496 465 9202

ES viastore systems S.A
 C/Paletes, 8 Edificio B
 Parc Tecnològic del Vallès
 08290 Cerdanyola (Barcelona)
 Spain
 Tel. +34 93 5910800
 Fax +34 93 5824397

www.viastore.com
info@viastore.com



viastore
 systems